

Please take the following steps to install device driver for connecting SP-3510 with PC. Illustrations show samples of Windows XP.

(Later version of Windows OS also complies to this procedure.)

Please start from step for the PC with internet connection.

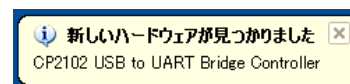
As for the PC without internet connection, Please start from step ⑧

after the following preparation; [(1)Download "CP210x_VCP_Windows.zip" (current file name as of 2015 April) from Silicon Laboratories Website to another PC with internet connection. (2)Decompress zip file, import the file to USB Memory,etc., then, export it to the PC for actual use.]

(Note) Software of decompressing zip file is required for Windows XP/Vista.

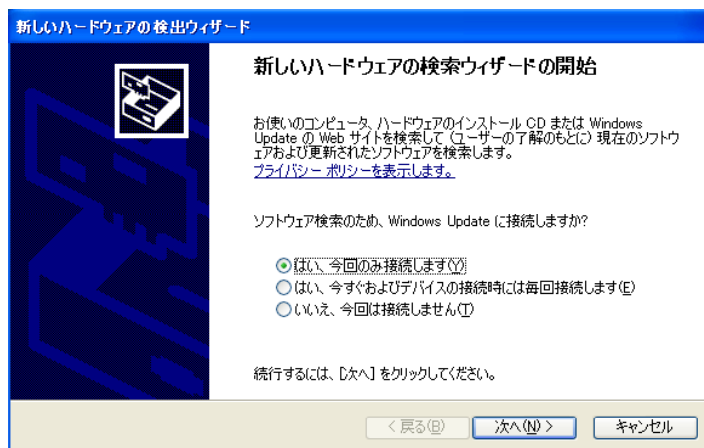
Step ① Connect SP-3510 and PC with USB cable packed in the delivered unit and switch on the power.

Step ② Message「新しいハードウェアが見つかりました」 appears.

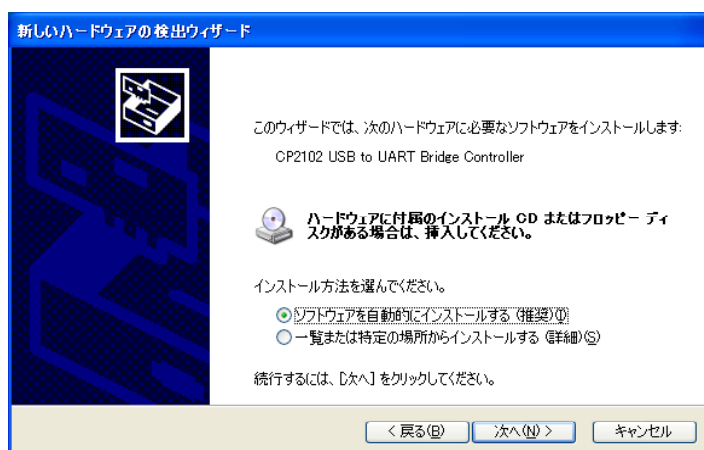


Step ③ Wizard as shown in the right is displayed.

Check the selection mark is located at (Y) and click 「次へ」 (N) button.



Step ④ Check the selection mark is located at (I) and click 「次へ」 (N) button.



Step ⑤ Wait for a while



Step ⑥ Click「完了」button.
(Installation completed)

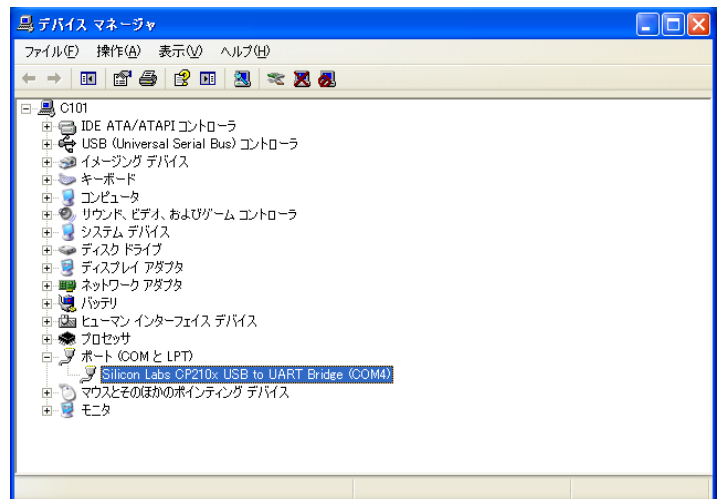
If installation is not completed, cancel the wizard and start again from Step ⑧.



Step ⑦ Open device manager and confirm
"Silicon Labs CP210x" is
existing in the folder of
port selection.

Please select this COM Port
No. for the software of
data receiving.

(Procedure to open device
manager differs depending
on each OS. Please refer to
HELP menu of each OS.)



COM Port No. may change if the location of USB cable connector is changed,
or any other new hardware is added. In this case, re-confirm Port No.
at device manager.

In the cases when "Silicon Labs CP210x" is not appeared or
「！」or「×」mark is appeared at "Silicon Labs CP210x",
installation is failed. Then, please go to Step ⑧.

This is the end of step when automatic installation is completed.

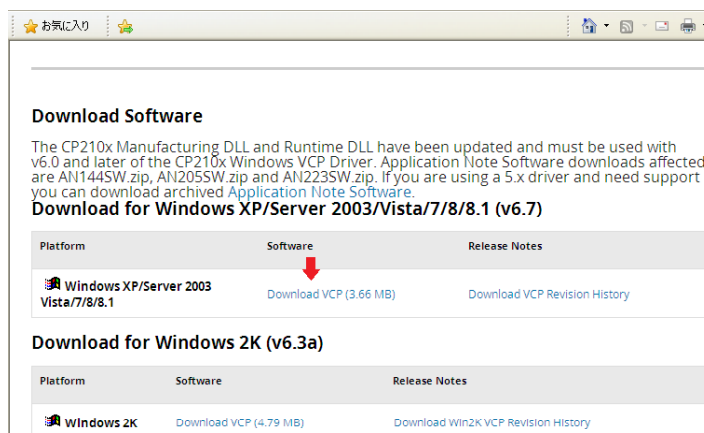
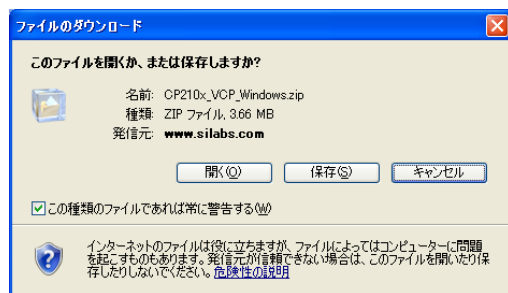
Step ⑧ Keep disconnecting the cable for SP-3510 and PC

Download installer of device driver from the following URL at Silicon Laboratories website.

<https://www.silabs.com/products/mcu/Pages/USBtoUARTBridgeVCPDrivers.aspx>

(URL as of April 2015)

Click the link pointed by red arrow as shown in the right, then, save the file at any place such as desktop, etc. by clicking (S) button.



Step ⑨ Decompress the zip file "CP210x_VCP_Windows.zip"

After decompressing, generally "CP210x_VCP_Windows" Folder is created at the same place of the zip file. (Procedure from next steps is explained subject to the condition that this folder is created.)

Installation at another PC is possible by import/export operation through USB Memory or SD Card.

Step ⑩ 2kinds of CP210xVCP Installer are existing at the folder of CP210x_VCP_Windows

For the PC with 32bit CPU

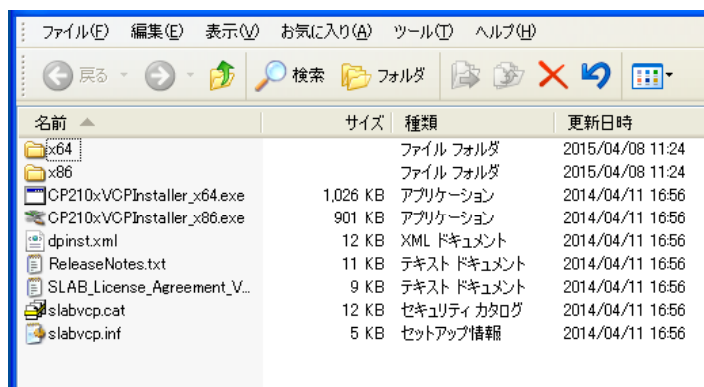
Double-click

CP210xVCPInstaller_x86.exe

For the PC with 64bit CPU

Double-click

CP210xVCPInstaller_x64.exe



Step ⑪ Click 「次へ」 (N)



Step ⑫ Check the selection mark is located at 「同意します」 (A) and click 「次へ」 (N).



Step ⑬ Click 「完了」 button.
(Installation completed)

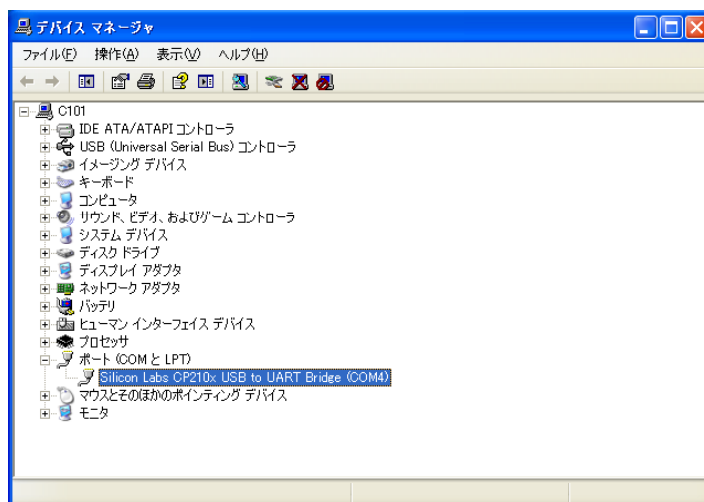


Step ⑭ Connect SP-3510 and PC with USB cable packed in the delivered unit and switch on the power.

Step ⑮ Open device manager and confirm "Silicon Labs CP210x" is existing in the folder of port selection.

Please select this COM Port No. for the software of data receiving.

(Procedure to open device manager differs depending on each OS. Please refer to HELP menu of each OS.)



COM Port No. may change if the location of USB cable connector is changed, or any other new hardware is added. In this case, re-confirm Port No. at device manager.

Here, the installation completed.

It doesn't matter to delete the zip file "CP210x_VCP_Windows.zip" and the created folder "CP210x_VCP_Windows" after completing the installation.