

This software is applied for receiving the output data from Spotron Welding Meter / Monitor and saving "csv" file into hard disk of PC.

### 1. Operating condition

- Windows PC having RS-232C Dsub connector for the products with RS-232C output, or USB port (USB2.0 and upper version) for the products with USB output.
- Windows OS XP and later version
- CPU 800MHz and larger
- RAM 1GB and larger

#### **\* Note for the products with RS-232C output:**

If PC has only USB port, commercial converter cable (232C/USB) may substitute, however, performance of the commercial converter cable is out of Spotron's warranty.

### 2. Connection with Welding Meter and Monitor

#### **2-1. For RS-232C output**

Model names: AMS-951,AMS-924,AMS-115,AMS-116,AMS-105S,AMS-107D,HDC  
(Except the products with different output such as parallel port)

Please use RS-232C cable packed with the delivered unit.

#### **2-2. For USB output**

Model names: SP-3510,SP-3290,SP-3221

SP-3510,SP-3290: Please refer to the another instruction manual;  
「SP-3510,SP-3290 device driver installation」

SP-3221: Please refer to the manual packed with the delivered unit  
for USB driver installation.

### 3. Installation

This software is independent application (File name:DataReceive2.exe)  
Installer is not equipped. Start-up by double clicking at desktop, etc.

Please download the software from Spotron website.

For the customer who bought SP-3510 after 01 July 2017, this software and instruction manual are available in the SD Card packed with the delivered unit.

#### 4. Operation of software

The window as below is displayed after double clicking application file.  
Select "COM Port No." and "Model Name" at each pull down menu column.  
Communication mode suitable for each model is automatically setup.

If selected COM Port No. is out of use, a message 「ポートが開けません」 is displayed.  
Then, click 「OK」 and repeat the selection by the other COM Port No.

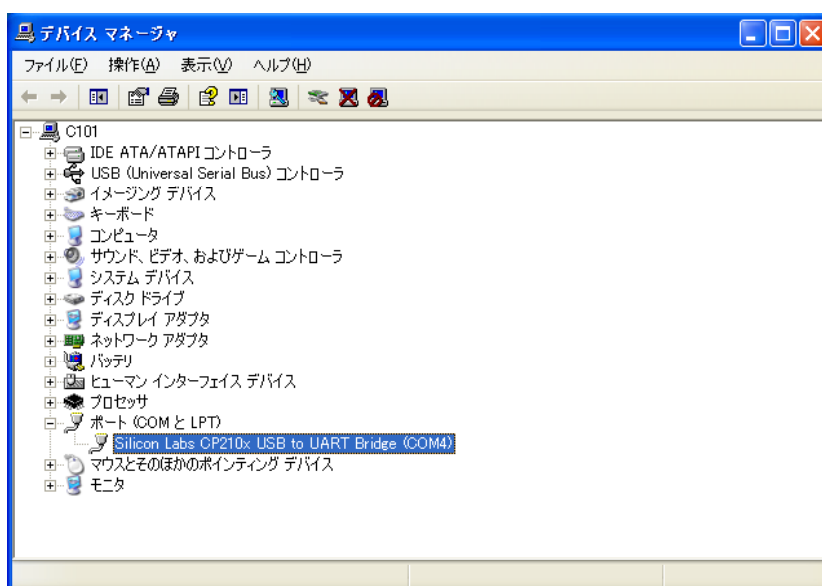


General Windows PC allocates pre-setting Port Nos. COM1 & COM2 for RS-232C Dsub connector.

For the connection with USB output, the Port No. is allocated from COM3 onward.

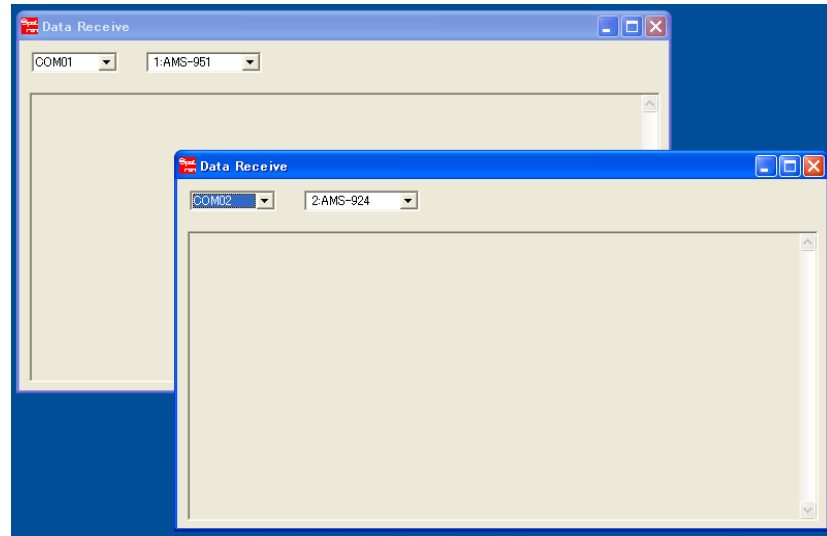
Open device manager and confirm Port No. at the tree display for port selection.

(Procedure to open device manager differs depending on each Windows OS.  
Please refer to HELP menu of Windows OS.)



(Example: Display on connecting SP-3510)

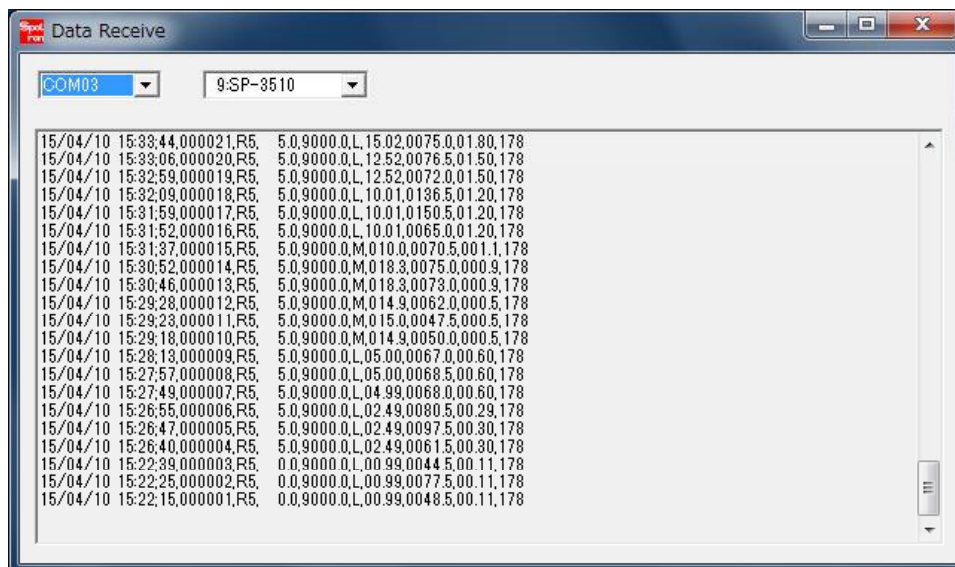
If multiple ports are available in the PC, data receiving for multiple models can be performed simultaneously by opening required numbers of window.



For changing the size of window, its possible to maxmize only by clicking the button located at upper right corner. However, scale-up/down of the window is impossible.

(Moving location of the window is possibe by dragging operation.)

Received data is displayed in the window as shown below.



## 5. Saving of the received data

The following folders and files are automatically created and the received data is saved by "csv" format. The created file can be opened by any spreadsheet program. As for AMS-105S, since there are 4 kinds of communication mode, please check the specification in the product manual and select an appropriate mode. As for AMS-116, please choose AMS-115.

- [ yyyy/mm/dd= Year/Month/Day, hh/mm/ss=Hour/Minute/Second ]
- 1:AMS-951** C:\Spotron¥AMS-951¥yyyy¥COM\_#¥yyyymmdd.csv
- 2:AMS-924** C:\Spotron¥AMS-924¥yyyy¥COM\_#¥yyyymmdd.csv
- 3:AMS-115** C:\Spotron¥AMS-115¥yyyy¥COM\_#¥yyyymmdd.csv
- 4:AMS-105S** Standard specification  
(Baud rate:9600bps Data length:8bit Parity:Nothing Stop bit:2bit)  
C:\Spotron¥AMS-105S¥yyyy¥COM\_#¥yyyymmdd.csv
- 5:AMS-105S-s** For seam welding application  
(Baud rate:9600bps Data length:8bit Parity:Nothing Stop bit:2bit)  
C:\Spotron¥AMS-105S¥yyyy¥COM\_#¥yyyymmdd.csv
- 6:AMS-105S-71** For special user application  
(Baud rate:9600bps Data length:7bit Parity:Nothing Stop bit:1bit)  
C:\Spotron¥AMS-105S¥yyyy¥COM\_#¥yyyymmdd.csv
- 7:AMS-105S-81** For single phase AC 5000cy seam welding application  
(Baud rate:9600bps Data length:8bit Parity:Nothing Stop bit:1bit)  
C:\Spotron¥AMS-105S¥yyyy¥COM\_#¥yyyymmdd¥hhmmss.csv
- 8:AMS-107D** C:\Spotron¥AMS-107D¥yyyy¥COM\_#¥yyyymmdd.csv
- 9:SP-3510** [Folder] C:\Spotron¥SP-3510¥yyyy¥COM\_#¥yyyymmdd  
[File for Data1]: 1\_yyyyymmdd.csv  
[File for Data2]: 2\_count number.csv or 2)count number.csv  
[File for Wave ]: w\_count number.csv or w)count number.csv

Configuration is same as the one for data saving to SD Card.  
Please refer to the clause for SD Card in the product manual.  
As for Data2 and Wave, only file name and information of Data1 are displayed at the header line of window.  
Contents of Data2 and Wave are saved into hard disk.

10:SP-3290    [Folder] C:\Spotron\SP-3290\yyyy\COM\_\yyyymmdd  
[File for Data1]: 1\_yyyymmdd.csv  
[File for Data2]: 2\_count number.csv or 2)count number.csv

11:SP-3221    C:\Spotron\SP-3221\yyyy\COM\_\yyyymmdd.csv

12:HDC        C:\Spotron\HDC\yyyy\COM\_\yyyymmdd.csv